

**SIVOX STEEL (INDIA)**

**Head Office**

No. 13, 2<sup>nd</sup> Floor, Narayan Building, Ardeshir Dadi Street,  
Girgaon, Mumbai, 400 004, India. T/F: +91 22 6749 6271

**Regd. Office**

No. 6, Ground Floor, Lavdeep Apartment,  
Dhumal Nagar, Waliv, Vasai Road (E), Thane 401 208, India  
T/F: +91 250 2300809 Email: sales@sivoxsteel.com

[www.sivoxsteel.com](http://www.sivoxsteel.com)



Quality Suppliers of  
**Buttweld Pipes Fittings**  
**Forged Fittings, Flanges**  
**Outlets & Fasteners**

**SIVOX**

## company profile



**Sivox Steel India** manufactures and exports Fittings, Flanges & Fasteners in Carbon Steel, Alloy Steel, Stainless Steel, Duplex & Super Duplex, Cu-Ni, Monel and Inconel materials.

Sivox Steel manufactures its products in different Sizes, Ranges, Type and Schedule-Class. Sivox Steel regularly supplies its material to core industries such as Oil & Gas, Chemical & Petrochemical, Power Plants, Offshore & Onshore, Ship Building, Construction, EPC & Other Engineering Companies.

**customer  
focused  
approach  
excellent  
service**

## mission

Our mission is to provide high quality service/ product combined with trusted client partnership, And to maintain high health and safety levels and solutions to the client's need.

## values

- ▶ Quality and safety first
- ▶ Monitoring continuous improvement through learning and development
- ▶ Innovation and creativity in solving problems
- ▶ An empowered, committed and motivated workforce

## quality

We have been certified as **ISO 9001:2008** company by **BSCIC** for best quality products, with a well maintained quality system of work, where we measure, analysis & implement for continual improvement in all sectors of our functioning, with special attention for customer service.



# buttweld pipes fittings

quality  
is our  
business  
plan

## Size

1/2"NB TO 48"NB

## Schedule

SCH20, SCH30, SCH40, STD, SCH80, XS,  
SCH60, SCH80, SCH120, SCH140, SCH160, XXS

## Material Type

### Stainless Steel

ASTM A403 WP Gr. 304, 304H, 309, 310,  
316, 316L, 317L, 321, 347, 904L

### Carbon Steel

ASTM /ASME A/SA 234 WPB-S, WPB-W,  
ASTM/ASME A/SA 860, WPHY 42, WPHY 46,  
WPHY 52, WPH 60, WPHY 65 & WPHY 70.

### Low Temp. CS

ASTM A420 WPL3 / A420WPL6

### Duplex Steel

ASTM / ASME SA 815 UNS NO.S 31803,  
S 32205, S 32550, S 32750, S 32760.

### Nickel Alloy

ASTM / ASME SB 366 UNS 2200 (NICKEL 200),  
UNS 2201 (NICKEL 201), UNS 4400 (MONEL400),  
UNS 8020 (ALLOY 20 / 20 CB 3, UNS 8825  
INCONEL (825), UNS 6600 (INCONEL 600),  
UNS (INCONEL 601), UNS 6625  
(INCONEL 625), UNS 10276 (HASTELLOY C 276)

### Alloy Steel

ASTM / ASME A 234 WP 1, WP 5, WP 9,  
WP 11, WP 12, WP 22, WP 23, WP 91.

### Value Added Services

Hot Dip Galvanizing, Epoxy Coating,  
Electro polish, Sand Blasting.

# pipe & fitting types

Elbow	- LR & SR-45°, 90° & 180°	Tee	- Barred, Equal & Reducing
Reducer	- Concentric & Eccentric	Nipple	- Swage & Barrel
Stubend	- Long & Short	U-Bend	
End Cap		Laterals	





# forged fittings

accurate chemistries for demanding applications

## Size

1/2"NB TO 4"NB

## Schedule

SCH20, SCH30, SCH40, STD, SCH80, XS, SCH60, SCH80, SCH120, SCH140, SCH160, XXS

## Material Type

### Stainless Steel

ASTM/ASME A/SA 182 WP F304,304L, 304H, 309, 310, 316, 316L, 317L, 321, 347, 904L

### Carbon Steel

ASTM/ASME A /SA A105/ A105N/ A694 F42/46/52/56/60/65/70

### Low Temp. CS

ASTM /ASME A/SA 350 GR LF1, LF2, LF3

### Duplex Steel

ASTM / ASME SA 815 UNS NO.S 31803, S 32205, S 32550, S 32750, S 32760.

### Nickel Alloy

ASTM / ASME SB 564 UNS 2200 (NICKEL 200), UNS 2201 (NICKEL 201), UNS 4400 (MONEL 400), UNS 8020 (ALLOY 20 / 20 CB 3), UNS 8825 INCONEL (825), UNS 6600 (INCONEL 600), UNS 6601 (INCONEL 601), UNS 6625 (INCONEL 625), UNS 10276 (HASTELLOY C 276)

### Alloy Steel

ASTM / ASME A 234 WP 1, WP 5, WP 9, WP 11, WP 12, WP 22, WP 23, WP 91.

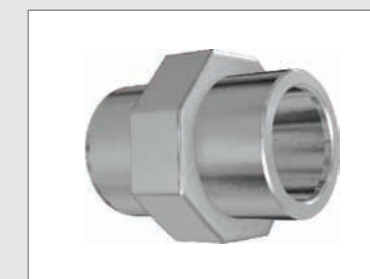
### Value Added Services

Hot Dip Galvanizing, Epoxy Coating, Electro polish, Sand Blasting.



# forge fitting types

Elbow - 45° & 90°	Tee	Union	Cross
Swage Nipple	Coupling	Cap	Plug
Bushing	Boss	Insert	



# flanges

## Bridging Pipes Withstanding Corrosion

### Size

1/2"NB TO 48"NB

### Schedule

SCH20, SCH30, SCH40, STD, SCH80, XS,  
SCH60, SCH80, SCH120, SCH140, SCH160, XXS

### Material Type

#### Stainless Steel

ASTM /ASME A/SA 182 GR F 304,304L, 304H,  
309, 310, 316, 316L, 317L, 321, 347, 904L

#### Carbon Steel

ASTM/ASME A /SA A105 /A105N / A694  
F42/46/52/56/60/65/70

#### Low Temp. CS

ASTM/ASME A/SA 350 GR LF1, LF2, LF3

#### Duplex Steel

ASTM / ASME SA 815 UNS NO.S 31803, S  
32205, S 32550, S 32750, S 32760.

#### Nickel Alloy

ASTM/ASME SB 564 UNS 2200 (NICKEL 200),  
UNS 2201 (NICKEL 201), UNS 4400 (MONEL  
400), UNS 8020 (ALLOY 20 / 20 CB 3, UNS  
8825 INCONEL (825), UNS 6600 (INCONEL  
600), UNS 6601 (INCONEL 601), UNS 6625  
(INCONEL 625), UNS 10276 (HASTELLOY C 276)

#### Alloy Steel

ASTM / ASME A/SA 182 WP 1, WP 5, WP 9, WP  
11, WP 12, WP 22, WP 23, and WP 91.

#### Value Added Services

Hot Dip Galvanizing, Epoxy Coating,  
Electro polish, Sand Blasting.

# flange types

Weld Neck	Socket Weld	Slip On
Blind	Screwed/Threaded	Long Weld Neck
Lapped Joint	Reducing	Spectacle Blind



# outlets

**built to  
withstand  
pressure in  
various  
classes**

## Size

1/2"NB TO 4"NB

## Schedule

SCH20, SCH30, SCH40, STD, SCH80, XS,  
SCH60, SCH80, SCH120, SCH140, SCH160, XXS

## Material Type

### Stainless Steel

ASTM/ASME A/SA 182 Gr. F304, 304L, 304H,  
309, 310, 316, 316L, 317L, 321, 347,904L

### Carbon Steel

ASTM/ASME A /SA A105/ A105N/ A694  
F42/46/52/56/60/65/70

### Low Temp. CS

ASTM/ASME A/SA 350 GR LF1,LF2,LF3

### Duplex Steel

ASTM / ASME SA 564 UNS NO.S 31803,  
S 32205, S 32550, S 32750, S 32760.

### Nickel Alloy

ASTM / ASME SB 564 UNS 2200 (NICKEL 200),  
UNS 2201 (NICKEL 201), UNS 4400 (MONEL  
400), UNS 8020 (ALLOY 20 / 20 CB 3, UNS 8825  
INCONEL (825), UNS 6600 (INCONEL 600), UNS  
6601 (INCONEL 601), UNS 6625 (INCONEL 625),  
UNS 10276 (HASTELLOY C 276)

### Alloy Steel

ASTM / ASME A/SA 182 WP 1, WP 5, WP 9,  
WP 11, WP 12, WP 22, WP 23, WP 91.

### Value Added Services

Hot Dip Galvanizing, Epoxy Coating,  
Electro polish, Sand Blasting.

# outlet types

Weldolet

Socket

Elbolet

Threadolet

Nipolet

Latrolet

Sweepolet



# industrial fasteners

high Tensile  
special  
DIN ASTM  
BS ANSI

## Material Type

### Stainless Steel

ASTM/ASME A/SA 193/194 GR B8, B8A, B8C, B8CA, B8M, B8MA, B8M2, B8M3, B8T, B8TA, AISI 302, 304, 304L, 316, 316L, 310, 317, 317L, 321, 347, 410, 420, 904L etc.

### Carbon Steel

ASTM/ASME A/SA 193/194 GR B6 and B6X, B7, B7M, Bare Condition, Galvanized, Phosphatised, Cadmium Plated, Hot Deep Galvanized, Bloodied, Nickel Chrome Plated, etc.

### Alloy Steel

4.6, 5.6, 6.6, 8.8, 10.9 & 12.9 'R', 'S', 'T' Conditions..

### Value Added Services

Hot Dip Galvanizing, Epoxy Coating, Electro polish, Sand Blasting.

# fastener types

Hex Head Bolts & Nuts	Hex Lock Nuts	Hex Slotted & Castle Nuts
Hex Nylock Nuts	Spring Washers	Socket Head Cap screws
Machined Washers	Self Tapping Screws	Machined screws
Eye Nuts & Bolts	Stud & Threaded Rods	





# pipes & tubes

Fulfillment of  
Piping and  
Fitting needs

## Size

Upto 24"NB. (Seamless & Welded)

## Wall Thickness

Sch. 5S to Sch. XXS

## Stainless Steel

ASTM A312 TP 304 / 304L / 304H / 316 / 316L / 317 / 317L / 321 / 310 / 347 / 904L etc.

## Carbon Steel

ASTM A53 GR. B / A106 GR. B / API 5L GRADE B / API 5L GR. X42 / 46 / 52 / 56 / 60 / 65 / 70 / A333 GR. 3/ GR. 6/ etc.

## Alloy Steel

ASTM A335 GR. P1 / P5 / P9 / P11 / P22 / P91 / etc.

## Others

Monel, Nickel, Inconel, Hastalloy, Copper, Brass, Bronze, Titanium, Tantalum, Bismuth, Aluminium, High Speed Steel, Zinc, Lead, etc.



# pipe & tube types

Round

Square

Rectangular

